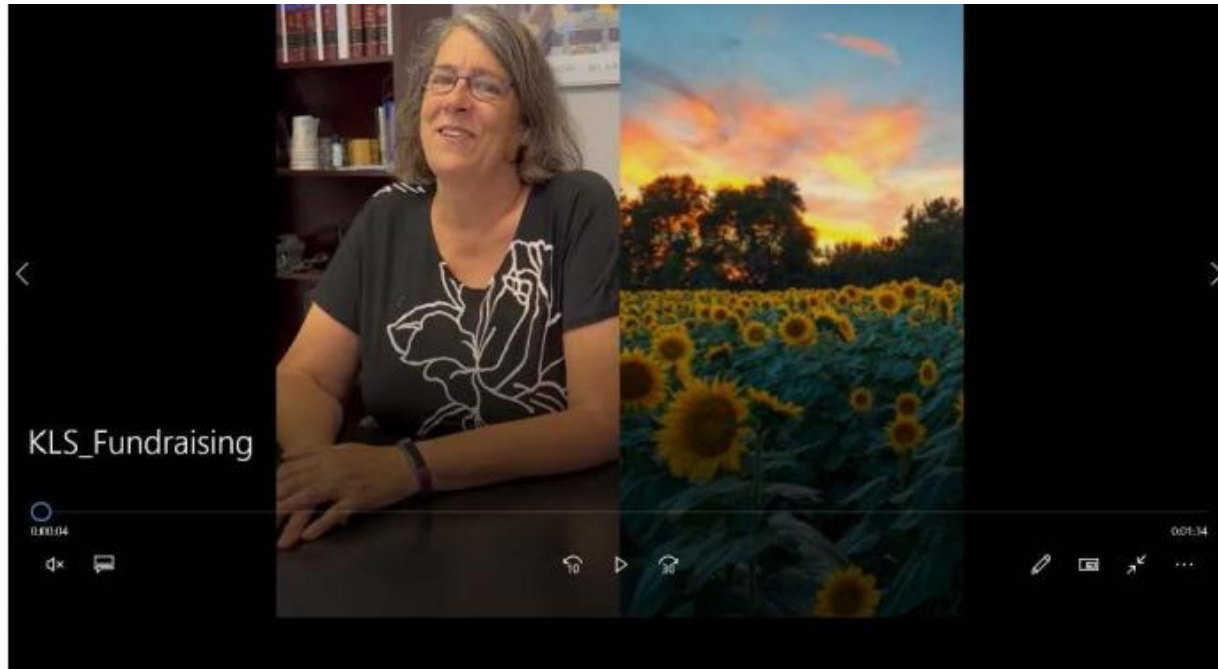


# Support KLS - Learn why you should and how you can



[Please watch this video](#), with an introduction by Marilyn Harp, Executive Director, that shows you all the work that KLS does for Kansans.

You can donate to KLS by [going here](#).

Last updated on November 18, 2022.

[Legal Questions and Answers](#)

Print

Table of Contents

NEWS

**News & publications**

The news about recent activities for needed peoples.

### [More News](#)

22 May 2025

KLS and Koch Pro Bono Lawyers Help Clear Path For Kansans To Work

From Law360 - PulseBy Sue Reisinger · May 21, 2025In-house counsel at Koch...

### [Continue Reading](#)

17 May 2025

Aspen Place complex in Gardner cited dozens of times before condemnation

Kansas Legal Services Executive Director, Matt Keenan, said Kansas Legal...

### [Continue Reading](#)

## **Our Partners**

LSC's support for this website is limited to those activities that are consistent with LSC restrictions.

